

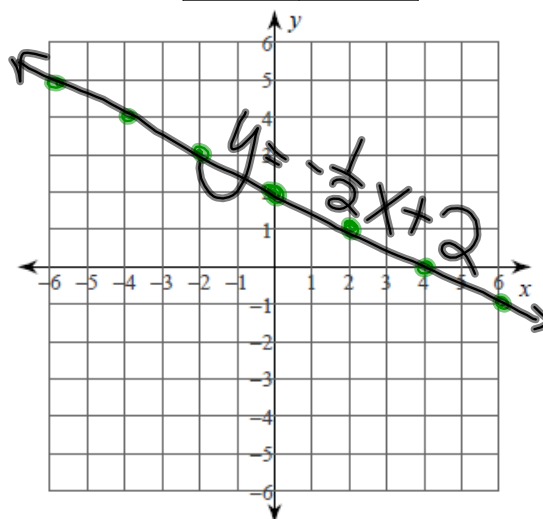
Warm Up: Solve for y and graph!

$$4x + 8y = 16$$

$$\begin{array}{r}
 -4x \qquad \qquad -4x \\
 \hline
 8y = \frac{-4x + 16}{8} \\
 y = \frac{-1}{2}x + 2
 \end{array}$$

$\downarrow 1$
 $\rightarrow 2$

x	y





With a partner,

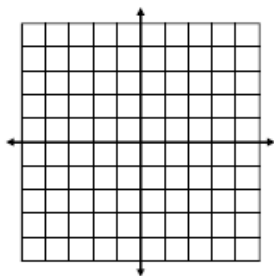
1. cut out each square on the paper
2. use the headings for the column as headings on your paper
3. match each equation with the appropriate graph, slope, and y-intercept
4. glue the correct ones together

Equation	Graph	Slope	Y-Intercept
$y - 3x = -4$		Slope = 1	y-int = -1

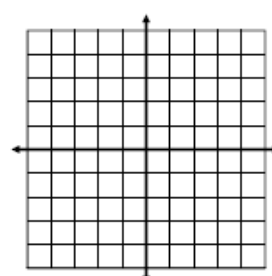
Math Homework**HOMEWORK!**

Solve each equation for y , then graph the equation on the given grid.

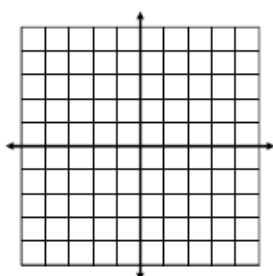
1. $3x + 4y = -12$



2. $4x - y = 1$



3. $12x + 8y = 24$



4. $7x + 2y = 8$

